

MONITOR TEMPERATURE WITH YOUR FAN STATUS ON YOUR DESKTOP

USING WEMOS D1, LM35 SENSOR, 1-CHANNEL RELAY AND IOT PLATFORM
(THINGIO.AI)



[FEATURES](#) [PRICING](#) [FAQ](#) [SUPPORT](#) [BLOG](#) [TUTORIAL](#) [API DOCS](#)

[LOGIN](#)

[REGISTER](#)

Best IoT Platform for Raspberry Pi, NodeMCU and ESP8266 Projects

Create Stunning Dashboards and Vizualzitions for your IoT Projects

[Get Started](#)


[Watch Demo](#)

[Join Our Referral Program](#)

[Invite](#)





 Continue with Google

or

SIGNUP TO GET INSTANT ACCESS.

Name

Enter Name

Email address

Enter email

Password

Retype Password

Contact Number*

Enter Mobile Number

I'm not a robot



I am continue with Google account

Then as your wish... 😊



Projects

+ Create new project

Search By Project Name

Temp Control Fan ⚙️

ID : 5c017f3d16052f680fa56062 Nov 30, 2018

View Project

Temperature ⚙️

ID : 5c00ff03562a9568106423fb Nov 30, 2018

View Project

People Counter ⚙️

ID : 5bee74174139ed3c65cf32a8 Nov 16, 2018

View Project

Ultra Sonic ⚙️

ID : 5bed77664139ed3c65cf25a7 Nov 15, 2018

View Project

Here I am already done with this project so it's showing Temp Control Fan.

So you have to create new project.





Projects

+ Create new project

🔍 Search By Project Name

View Project

Create A Project ✕

Project Name

Create

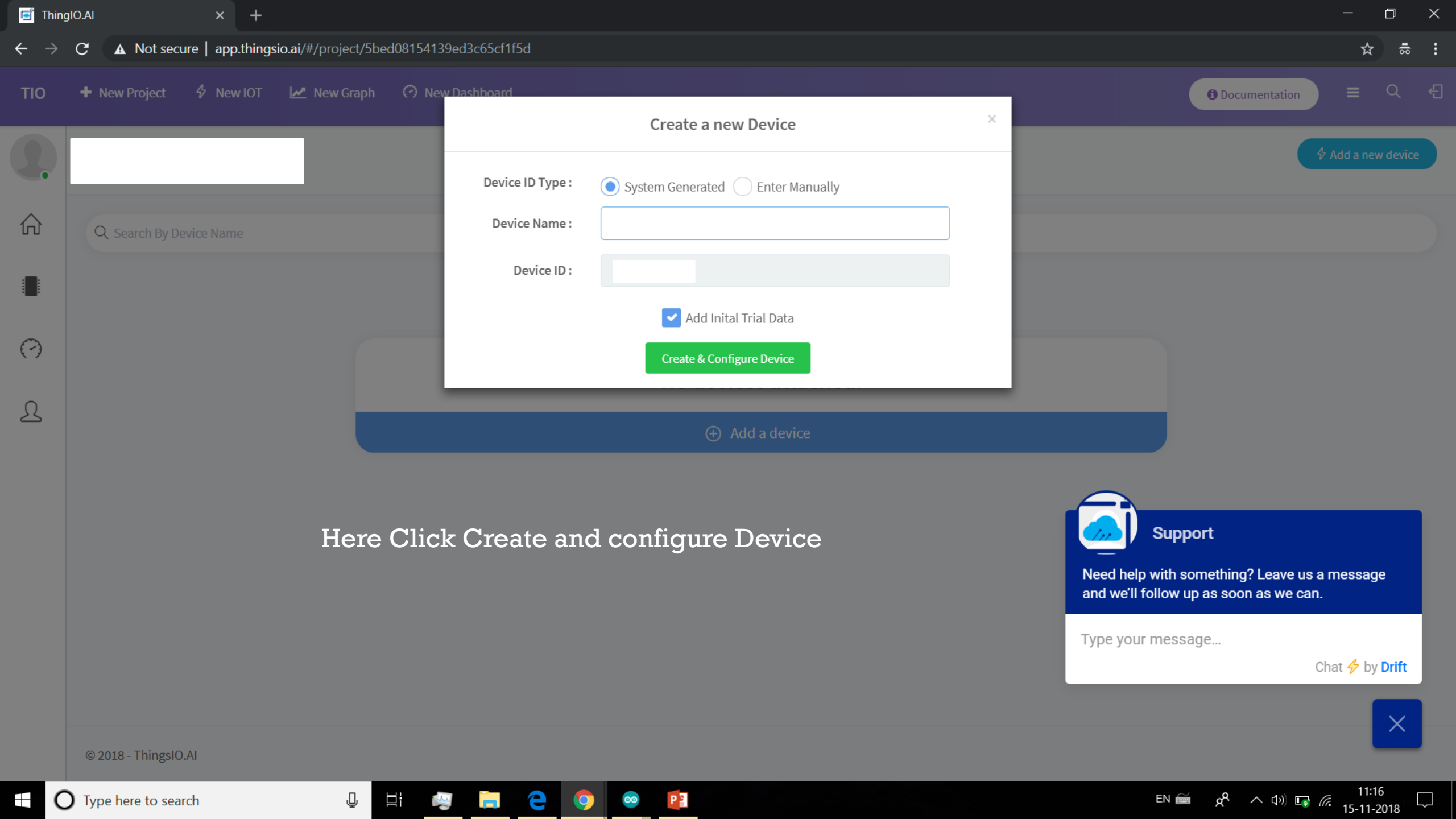
Support

Need help with something? Leave us a message and we'll follow up as soon as we can.

Type your message...

Chat ⚡ by Drift

✕



Create a new Device

Device ID Type : System Generated Enter Manually

Device Name :

Device ID :

Add Initial Trial Data

Create & Configure Device

Here Click Create and configure Device



Support

Need help with something? Leave us a message and we'll follow up as soon as we can.

Type your message...

Chat by Drift





Configure Device - [redacted]

General

Device ID

Created - Nov 15, 2018
Updated - Nov 15, 2018

Parameters

<input type="text"/>	decimal	<input type="button" value="x"/>
<input type="text"/>	decimal	<input type="button" value="x"/>
<input type="button" value="Add a new property"/>		

Energy Parameter*

Transformation*

Argument*

Aggregate

And then click on Update Device

Support

Need help with something? Leave us a message and we'll follow up as soon as we can.

Type your message...

Chat ⚡ by Drift



Configure Device - [redacted]

General

Device ID
[redacted]

Created - Nov 15, 2018
Updated - Nov 15, 2018

Energy Parameter* [redacted]

Transformation* Multiply


Argument* 1

Aggregate

Parameters

[redacted] decimal [X]


[redacted] decimal [X]



Device updated successfully

OK

Update Device Close



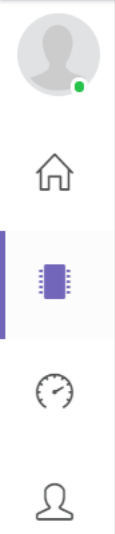
Support

Need help with something? Leave us a message and we'll follow up as soon as we can.

Type your message...

Chat ⚡ by Drift





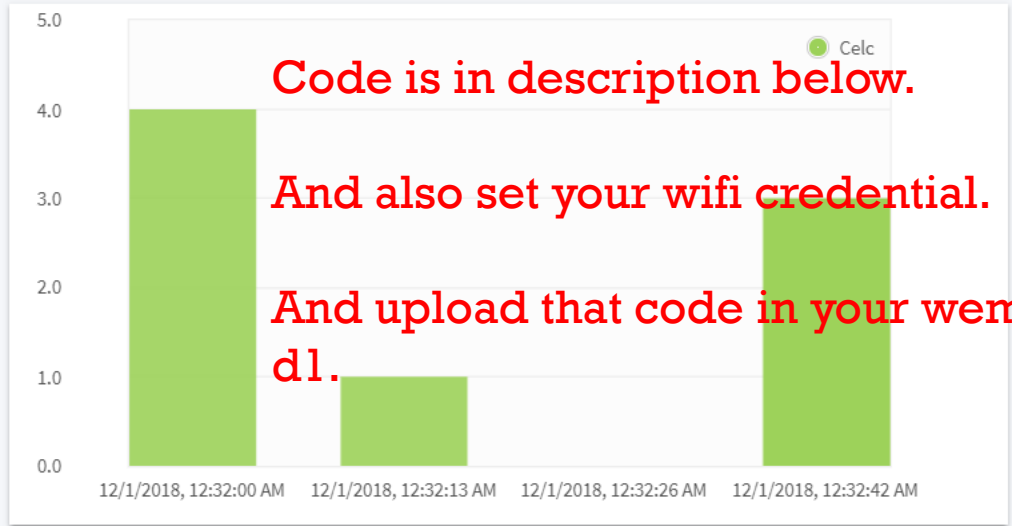
an
in

Quick Analysis ▾ Sample Codes Send Trial Data ~ Create Graph ⚙ Configure Device

Energy

3
Units

Energy generated today



Data Point

Dec 1, 2018, 12:32:42 AM

3
Celc

0
Fan

Last 5 data

Refresh

1	Slave ID - 1	Dec 1, 2018, 12:32:42 AM
2	Slave ID - 1	Dec 1, 2018, 12:32:42 AM
3	Slave ID - 1	Dec 1, 2018, 12:32:26 AM
4	Slave ID - 1	Dec 1, 2018, 12:32:13 AM

Device Graphs

Here Celc is 3 Because of garbage value of LM35. You will definitely get your output when you are using LM35 sensor.

No Graphs Created

Create Graph

